

**The  
Bishops**



**Matchday  
Programme**

**Walter C. Parson  
South West Peninsula  
Football League  
Premier East**

**Season**



**2025/26**

**BISHOPS LYDEARD V**

**HONITON TOWN**

**Wednesday 20th August 2025**

**Kick Off 7.30pm**

**PROUD SPONSORS OF BLAFC**

**QUEEN STREET**  
  
**GARAGE**

**2001**  
QUALITY SERVICE GUARANTEED



For all of your Car Servicing Needs  
Including MOT's & Diagnostics

---

Friendly  
Approachable  
Honest  
Reliable Team

---

First Class Service  
Competitive Prices

---

Tel:- 01823 333 385  
E.Mail:- [info@queenstreetgarage.co.uk](mailto:info@queenstreetgarage.co.uk)

**Queen Street, Taunton, TA1 3AX**

# Bishops Lydeard AFC

## Club History

### **Bishops Lydeard Association Football Club...**

Is an FA Charter Standard Community Club, that has a well-established youth section, senior section and girls/women's section with over 350 participants

The football club playing fields and clubhouse are located in the rural village of Bishops Lydeard, five miles north-west of Taunton in Somerset.

The club is over 100 years old and has developed into one of the largest clubs in the South West. Having played at various venues in the village it is now firmly entrenched at Darby Way. Due to the growth of the club, youth, ladies, and extra men's sides, we had to expand our facilities in 1999 and now play on Morris Meadow, kindly rented to us by Mr. Morris. This is the field beside the main pitch.

We also use the adjoining field, Glanfield Meadow - named after Mr. Glanfield who kindly sold us the land when he stepped away from farming.

In 1998 the adult and youth section joined forces to become one club. This held many advantages which you will see today when visiting the club. What was once a men's side, and the odd youth team run by an adult for the village kids has developed into football for the community at all ages and genders.

The senior side of the club has a very successful Ladies section which has been led by Julie Bowker since it was formed in 2001. We now have two ladies teams; the Firsts playing in the South West Women's Football League and the Reserves in Somerset County Women's League. The adult men's teams are headed by the First team who gained promotion in 2016 to the Western League following a Winner takes all game against Nailsea and Tickenham to finish Champions of the Somerset Senior Premier League; there is also a Reserve Team playing in the Somerset County League and a Colts team that play in Division 2 of the Taunton & District Saturday League.

In 2008 the clubs dream of developing an all-purpose club house to replace its 'Shack' was made in to reality when Iain Hunter formally announced that he had achieved the funding required to start the build after 5 years of meetings, fund raising and form filling. In January 2009 the whole club celebrated along with Iain when the then England under 21 coach Stuart Pearce arrived at the club to formally cut the ribbon.

The philosophy of the club is to provide a safe and fun environment for the youth to train, practice, express themselves and play football. The same principle is applied to the adult section with one overriding difference - push players to play at the highest level they can achieve. This undoubtedly means that BLAFC will ultimately lose players to a higher standard of football until we can match the level, something that is a constant topic of conversation on a Saturday afternoons for the faithful.

In 2016 planning permission was granted for the erection of floodlights which were promptly installed to enable the First Team to step into Western League Football. Those that visit the club frequently will notice a lot of development work has taken place to achieve the stringent ground grading. The pitch has been widened, new dug-outs purchased and a path has been made around the perimeter of the pitch. The stand was erected as part of the requirement for Western League Football, which further enhances the ground and the clubs determination to progress.

In its first season in Western League Division One, the team worked hard to achieve a creditable 6th place finish, in the 2017/18 season the team finished 14<sup>th</sup> and 12<sup>th</sup> In 2018/19. After two seasons of little or no football where the Pandemic hit the World ..... 2021/22 proved difficult for the first team who never really gained any momentum finishing the season in 20<sup>th</sup> position out of 21.

Last season the club decided to embrace the depth of youth talent in its ranks and give those of strength and ability the chance in the Western League. Although again a disappointing season with the league position it was encouraging to see the player and team ability grow with the experience gained.

For Season 2023/24 the Club were laterally moved to the SW Peninsula Premier East, where although the team finished in 16<sup>th</sup> position it was a useful experience for the young squad. 2024/25 showed signs of improvement with some good results and a 14<sup>th</sup> place League finish. Also the Team went on the long trip to Camelford 'twice'. In the FA Vase they came away with a 1-0 win which was followed up 6 weeks later with a 3-2 win in the League Cup.

Here's to further improvement in 2025/26

# **BISHOPS LYDEARD**

**Colours:- Red and Black Striped Shirts  
Black Shorts, Red Socks**

## **Matchday Squad**

Managers - **Paul West, Luke Bryant**

Coach - **Gary Knight**

Physio - **Luke Bryant**

## **Players From**

Adam Willis

Albe West

Ben Martin (Captain)

Ben Robinson

Ethan Jones

Harry Scott

Jake Brice

Jake Poole

James Cottrill

Joe Hollands

Lewis Wright

Liam Scovell

Louie Ward

Luke Bullivant

Marky Jones

Olly Rayson

Ryan James

Travis Knapp

Will Porter

Chris Barratt

# HONITON TOWN

Colours:- All Royal Blue

## Matchday Squad

Managers - Dan Tavender & Leroy Venn

## Players From

Joseph Chamberlain

Chimenim Chinnah

Toby Fletcher

Jordan Robert Harris

Kyle Howell

Adam Paramore

Luke Paramore

Jake Sellick

Jack Smith

Daniel Tavender

Benjamin Gary Turner

Miles Barron

Morgan Pearce

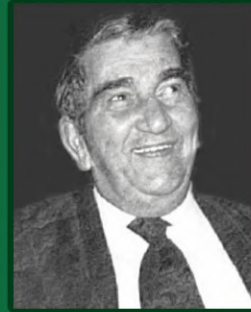
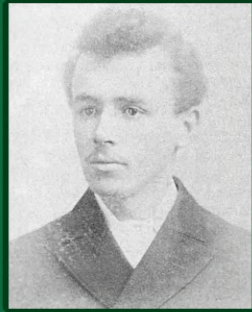
Tom Perryman

Jenson Phillips



Walter C. Parson  
Funeral Directors

PROUD  
SPONSORS



1842



→ Today

# Family run Funeral Directors for 7 generations

Visit us in:

Crownhill, Callington, Exeter, Ivybridge,  
Newton Abbot, Plympton, Plymstock, Saltash,  
St Judes, Tavistock, Torpoint or Torquay.

Part of the  
Walter C. Parson Group:



Pidgen & Son  
Funeral Service



Pengelly  
Funeral Service

☎ 01752 767676

🌐 [wcpltd.com](http://wcpltd.com)

# Today's Match Officials

Referee - Michael Richards

Assistant Referees  
Ashley Hallett and  
Kevin Pearce

4<sup>th</sup> Official - Not Today

VAR - N/T

Assistant VAR - N/T

Support VAR - N/T

VAR Room Tea Maker - N/T

VAR Room Dish Washer - N/T



# BISHOPS LYDEARD AFC

## FIRST TEAM RESULTS 2025/26

Date	Venue	Comp	Opponents	F/A	Att
2/8/25	Home	SWPL	Bovey Tracey	0-1	51

<b>BLAFC Scorers</b>	-
----------------------	---

Date	Venue	Comp	Opponents	F/A	Att
6/8/25	Home	SWPL	Cullompton Rangers	0-1	77

<b>BLAFC Scorers</b>	-
----------------------	---

Date	Venue	Comp	Opponents	F/A	Att
9/8/25	Away	SWPL	Bridport	0-4	171

<b>BLAFC Scorers</b>	-
----------------------	---

Date	Venue	Comp	Opponents	F/A	Att
16/8/2	Away	SWPL	Torridgeside	0-1	??

<b>BLAFC Scorers</b>	-
----------------------	---



# Bishops Lydeard AFC

## Find Info 'On the WEB'



### BLAFC Club Website

[blafc.org.uk](http://blafc.org.uk)

### facebook

[facebook.com/BishopsLydeardAFC](https://facebook.com/BishopsLydeardAFC)



[x.com/\\_BLAFC\\_](https://x.com/_BLAFC_)

### Instagram

[instagram.com/bishopslydeardafc](https://instagram.com/bishopslydeardafc)

### Walter C. Parson Peninsula League

[swpleague.co.uk](http://swpleague.co.uk)

**SEARCH.... SW Peninsula League**

### Ladies First - SWRWFL Premier Division

[fulltime.thefa.com/index.html?league=49427966](http://fulltime.thefa.com/index.html?league=49427966)

**SEARCH.... South West Regional Womens Football League**

### Ladies Reserves - SCWL Division 1

[fulltime.thefa.com/index.html?league=1045069](http://fulltime.thefa.com/index.html?league=1045069)

**SEARCH.... Somerset County Women's League**

### Mens Reserves - SCL Division 2

[fulltime.thefa.com/index.html?league=3894227](http://fulltime.thefa.com/index.html?league=3894227)

**SEARCH.... Uhsport Somerset County League**

### Youth Team - WCFYL Premier Division

[fulltime.thefa.com/index.html?league=873622](http://fulltime.thefa.com/index.html?league=873622)

**SEARCH.... Western Counties Floodlight Youth League**

IFAB®

THE INTERNATIONAL FOOTBALL ASSOCIATION BOARD



# 'Only the captain' guidelines

# 'Only the captain' guidelines

## **Introduction**

Respect and fairness are core values of football, but referees and other match officials are regularly subjected to verbal and/or physical dissent when they make decisions. In extreme cases, players sometimes run at referees and surround or mob them, which shows a lack of respect for the referee, harms the image of the game and can be intimidating and upsetting.

Stronger collaboration between the referee and the team captains can help instil fairness and mutual respect. In this regard, so that the referee can explain key decisions, only the captains will be allowed to approach the referee, provided that they do so respectfully and conduct themselves as such. At the same time, it will be the responsibility of each captain to ensure that their team-mates remain a reasonable distance from the referee and do not interfere in the interaction between the referee and the team captain(s).

The following simple guidelines should assist organisers of competitions wishing to apply the 'only the captain' principles.

## **Guidelines**

- Normal interactions between players and the referee are allowed and remain important (to promote transparency and avoid possible frustration and conflict)
- Any player (including the captain) who shows dissent by word or action will be cautioned (yellow card)
- The referee will, where appropriate, explain important decisions to the captain(s) and/or the player(s) involved in an incident

- To prevent players mobbing or surrounding the referee in major situations and following key incidents or decisions:
  - only one player from each team – usually the captain – is allowed to approach the referee and, when doing so, they must always interact in a respectful manner
  - the referee may instruct/encourage players (verbally or with gestures) not to approach them
  - the team captains are responsible for helping to direct their team-mates away from the referee
  - players who approach/surround the referee when they are not permitted to do so may be cautioned (yellow card)
  - if appropriate, the referee may delay the restart of play to allow the captain(s) time to speak with their team-mates to explain a decision, demand proper behaviour, etc.
- Interaction with, or an approach by, any player other than the captain is at the discretion of the referee, e.g. if the player has committed an offence, been fouled and/or is injured

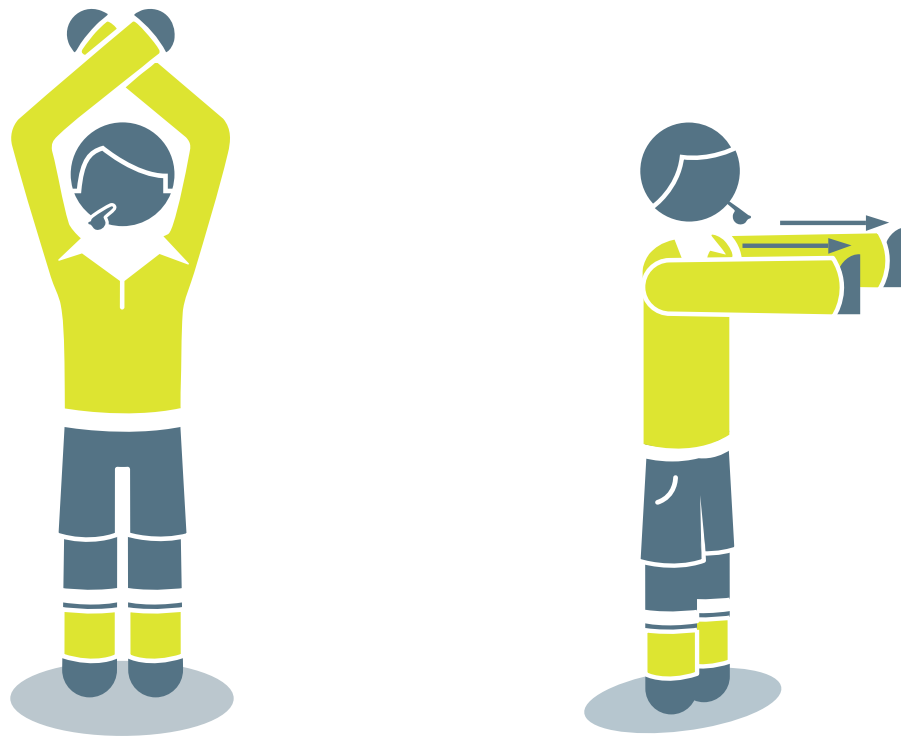
### **When the captain is the goalkeeper**

- Where the goalkeeper is the captain, the referee must be told, no later than at the coin toss before kick-off, which player is nominated to approach the referee instead of the goalkeeper
- Only the goalkeeper or the nominated player, not both, may approach the referee
- If the nominated player is substituted or sent off, another player must be nominated

### Option for youth, veterans, disability and grassroots football

The guidelines below apply only to youth, veterans, disability and grassroots football.

- The referee can initiate the ‘only the captain’ guidelines by blowing the whistle and using the following signal:
  - Raising both arms above their head and crossing them at the wrists
  - Uncrossing their arms and moving them in front of their body with their palms open in a forward pushing motion to indicate that the players must not approach



- A captain-only zone will then extend for 4 m (4.5 yds) around the referee
- Where appropriate, the referee may move away from the players to create the captain-only zone
- No player is permitted to enter the captain-only zone except each team’s captain, who should wear an identifying armband
- The captain has a degree of responsibility for encouraging team-mates to respect the captain-only zone and remain at least 4 m (4.5 yds) away from the referee

- If one player other than the captain enters the captain-only zone, the offender should be cautioned (YC) for dissent by action
- If more than one player from a team enters the captain-only zone, at least one player must be cautioned (YC) – this will usually be the first unauthorised player to enter the captain-only zone or the player whose approach is most aggressive
- Any incident in which more than one unauthorised player from a team enters the captain-only zone must be reported to the appropriate authorities after the match\*

*\*It is strongly recommended that competition organisers have sanctions in place to deal with situations where more than one player from a team enters the captain-only zone.*